

CROSS VALLEY FARMS

Apple

RED DELICIOUS 175 COUNT WASHINGTON FANCY FRESH
REF

7480247



175 EA

Product Description

Manufacturer: CROSS VALLEY FARMS, Mfr. Product # 012633

Additional Description

RED DELICIOUS APPLES, AN EATING VARIETY, HAVE A STRONG SWEET FLAVOR, AND ARE MEDIUM FIRM. THE DARK AND INTENSE CRIMSON COLOR GIVES IT A STRONG SHELF APPEAL. THE TEXTURE OF RED DELICIOUS APPLE MAY BECOME "MEALY" WITH STORAGE. FRESH, WHOLE, ONE VOLUME BUSHEL

Ingredients

APPLE

Product Information

Class: 25 - PRODUCE, FRESH

Category: 340 - APPLES AND PEARS, FRESH

Group: 7883 - APPLES, RED DELICIOUS, FRESH

Preparation & Cooking

Preparations and Cooking Instructions

WASH AND SERVE WHOLE OR CUT INTO SECTIONS RAW, OR USE PER RECIPE INSTRUCTIONS IN COOKING AND BAKING.

Handling Instructions

KEEP HANDLING TO A MINIMUM TO AVOID BRUISING. REFRIGERATE TO MAINTAIN FRESHNESS. TEMPERATURE HUMIDITY RECOMMENDATION 32-40 DEGREES F 90-98 PERCENT RELATIVE HUMIDITY. KEEP IN ORIGINAL CARTON WITH LID CLOSED TO PREVENT ABSORPTION OF ODORS FROM OTHER FOODS OR PASSING ODORS TO OTHER FOODS. APPLES GIVE OFF ETHYLENE GAS; KEEP AWAY FROM OTHER SENSITIVE FRUITS, FLOWERS, AND VEGETABLES SUCH AS BROCCOLI, CABBAGE, AND LETTUCE. EXPOSURE TO ETHYLENE MAY ACCELERATE SOFTENING OF APPLES.

Serving Suggestions:

AMERICA'S FAVORITE SNACKING APPLE, REDS ARE ALSO GREAT IN SALADS. THEY SOFTEN ON COOKING AND ARE NOT A GOOD CHOICE FOR PIES, BUT ARE GREAT FOR RECIPES SUCH AS APPLE CRISP, COBBLERS, AND APPLESAUCE.



RED DELICIOUS 175 COUNT WASHINGTON FANCY FRESH REF

CROSS VALLEY FARMS

175 EA

Manufacturer: CROSS VALLEY FARMS

7480247

Manufacturer Product #: 012633

Nutritional Facts

Serving Size G (242G)
Servings Per Container

Amount Per Serving
Calories 130
Calories from Fat 0

% Daily Value *

Total Fat 0G 0%

Saturated Fat 0G

Trans Fat 0G

Cholesterol 0mg 0%

Sodium 0mg 0%

Total Carbohydrate 34G 11%

Dietary Fiber 5G 20%

Sugars 25G

Protein 1G

Vitamin A 2%

Vitamin C 8%

Calcium 2%

Iron 2%

* Percent Daily Values are based on a 2,000 calorie diet. Your daily values may be higher or lower depending on your calorie needs:

	Calories	2,000	2,500
Total Fat	Less than	65g	80g
Sat Fat	Less than	20g	25g
Cholesterol	Less than	300mg	300mg
Sodium	Less than	2400mg	2400mg
Total Carbohydrate		300g	375mg
Dietary Fiber		25g	30mg

Supplemental Facts

% Daily Value *

None Specified at this time

* Percent Daily Values are based on a 2,000 calorie diet. Your daily values may be higher or lower depending on your calorie needs

Allergens

ALLERGEN	DOES NOT CONTAIN	CONTAIN	MAY CONTAIN	NO DATA
Crustacean				•
Eggs				•
Fish				•
Gluten				•
Lactose				•
Milk				•
Mustard				•
Peanuts				•
Soy				•
Tree nuts				•
Wheat				•

Nutritional Disclaimer

The nutritional and ingredient information provided is based on data US Foods, Inc. receives from manufacturers and may include information derived from third-party sources such as the United States Department of Agriculture. The information provided is representative and, as a result, there may be some slight differences between the information posted and the information on the product label with respect to ingredients and/or nutritional values. The most accurate and up to date source for product information is on the product label. US Foods, Inc. neither assumes any legal liability nor makes any warranty or guaranty, either express or implied, regarding the completeness, accuracy or usefulness of this information. Product images are provided for reference only and may not reflect current packaging.



PACKER

Banana

FRESH REF

9073909



10 LB

Product Description

Ingredients

BANANA

Product Information

Class: 25 - PRODUCE, FRESH

Category: 346 - TROPICAL FRUIT, FRESH

Group: 2241 - BANANAS, FRESH



FRESH REF

PACKER

10 LB

9073909

Nutritional Facts

Serving Size G (126G)
Servings Per Container

Amount Per Serving

Calories 110 Calories from Fat 0

% Daily Value *

Total Fat 0G 0%

Saturated Fat 0G

Trans Fat 0G

Cholesterol 0mg 0%

Sodium 0mg 0%

Total Carbohydrate 30G 10%

Dietary Fiber 3G 12%

Sugars 19G

Protein 1G

Vitamin A 2%

Vitamin C 15%

Calcium 0%

Iron 2%

* Percent Daily Values are based on a 2,000 calorie diet. Your daily values may be higher or lower depending on your calorie needs:

		Calories	2,000	2,500
Total Fat	Less than	65g	80g	
Sat Fat	Less than	20g	25g	
Cholesterol	Less than	300mg	300mg	
Sodium	Less than	2400mg	2400mg	
Total Carbohydrate		300g	375mg	
Dietary Fiber		25g	30mg	

Supplemental Facts

% Daily Value *

None Specified at this time

* Percent Daily Values are based on a 2,000 calorie diet. Your daily values may be higher or lower depending on your calorie needs.

Allergens

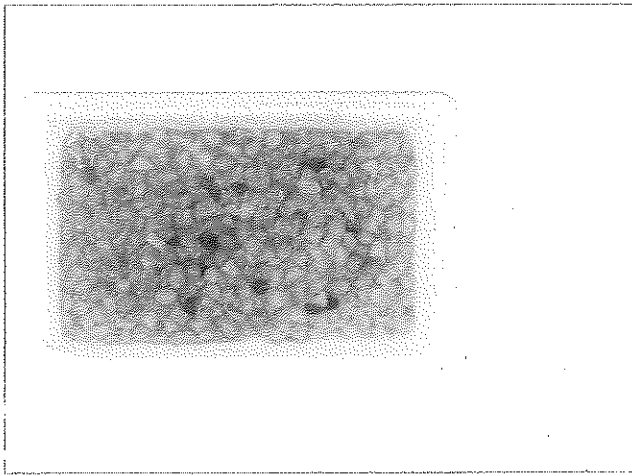
ALLERGEN	DOES NOT CONTAIN	CONTAIN	MAY CONTAIN	NO DATA
Crustacean				•
Eggs				•
Fish				•
Gluten				•
Lactose				•
Milk				•
Mustard				•
Peanuts				•
Soy				•
Tree nuts				•
Wheat				•

Nutritional Claims

- This product is trans fat free

Nutritional Disclaimer

The nutritional and ingredient information provided is based on data US Foods, Inc. receives from manufacturers and may include information derived from third-party sources such as the United States Department of Agriculture. The information provided is representative and, as a result, there may be some slight differences between the information posted and the information on the product label with respect to ingredients and/or nutritional values. The most accurate and up to date source for product information is on the product label. US Foods, Inc. neither assumes any legal liability nor makes any warranty or guaranty, either express or implied regarding the completeness, accuracy or usefulness of this information. Product images are provided for reference only and may not reflect current packaging.



MONARCH

Fruit Cocktail

DICED IN EXTRA LIGHT-SYRUP CHOICE CANNED

8731028

6/#10 CN

Product Description

Manufacturer: MONARCH, Mfr. Product # 541049

Additional Description

MEETS OR EXCEEDS FOODSERVICE INDUSTRY STANDARDS. DISTINCTLY DIFFERENT.

Ingredients

DICED PEACHES, WATER, DICED PEARS, GRAPES, SUGAR, PINEAPPLE SECTORS, HALVED CHERRIES ARTIFICIALLY COLORED RED WITH CARMINE.

Product Information

Class: 17 - FRUITS & VEGETABLES, CANNED & DRIED

Category: 139 - FRUITS, CANNED

Group: 1736 - FRUITS, MIXED, CANNED

Preparation & Cooking

Preparations and Cooking Instructions

READY TO USE.

Handling Instructions

STORE IN COOL, DRY SPACE WITH AMBIENT TEMPERATURE. REFRIGERATE REMAINING FRUIT IN SPEARATE CONTAINER AFTER OPENING

Serving Suggestions:

PERFECT FOR SCHOOLS, SALAD BARS AND HOSPITALS.



DICED IN EXTRA LIGHT-SYRUP CHOICE CANNED

MONARCH

6/#10 CN

Manufacturer: MONARCH

8731028

Manufacturer Product #: 541049

Nutritional Facts

Serving Size (124G)	
Servings Per Container 144	
Amount Per Serving	
Calories 60	Calories from Fat 0
% Daily Value *	
Total Fat 0g	0%
Saturated Fat 0g	0%
Trans Fat 0g	
Cholesterol 0mg	0%
Sodium 10mg	0%
Total Carbohydrate 17g	5%
Dietary Fiber 0g	0%
Sugars 11g	
Protein 0g	
Vitamin A	4%
Vitamin C	2%
Calcium	0%
Iron	0%

* Percent Daily Values are based on a 2,000 calorie diet. Your daily values may be higher or lower depending on your calorie needs:

		Calories	2,000	2,500
Total Fat	Less than	65g	80g	
Sat Fat	Less than	20g	25g	
Cholesterol	Less than	300mg	300mg	
Sodium	Less than	2400mg	2400mg	
Total Carbohydrate		300g	375mg	
Dietary Fiber		25g	30mg	

Supplemental Facts

% Daily Value *	
Polyunsaturated Fat 0 g	
Monosaturated Fat 0 g	
Potassium 150 mg	4%

* Percent Daily Values are based on a 2,000 calorie diet. Your daily values may be higher or lower depending on your calorie needs.

Allergens

ALLERGEN	DOES NOT CONTAIN	CONTAIN	MAY CONTAIN	NO DATA
Crustacean	•			
Eggs	•			
Fish	•			
Gluten				•
Lactose				•
Milk	•			
Mustard				•
Peanuts	•			
Soy	•			
Tree nuts	•			
Wheat	•			

Marketing Claims

- This product is kosher

Nutritional Disclaimer

The nutritional and ingredient information provided is based on data US Foods, Inc. receives from manufacturers and may include information derived from third-party sources such as the United States Department of Agriculture. The information provided is representative and, as a result, there may be some slight differences between the information posted and the information on the product label with respect to ingredients and/or nutritional values. The most accurate and up to date source for product information is on the product label. US Foods, Inc. neither assumes any legal liability nor makes any warranty or guaranty, either express or implied, regarding the completeness, accuracy or usefulness of this information. Product images are provided for reference only and may not reflect current packaging.



PACKER

Grape

RED SEEDLESS FRESH REF

7073919



11 LB

Product Description

Ingredients

GRAPE

Product Information

Class: 25 - PRODUCE, FRESH

Category: 345 - STONE FRUIT AND GRAPES, FRESH

Group: 7892 - GRAPES, RED, FRESH

Preparation & Cooking

Handling Instructions

Maintain adequate air circulation during storage. Keep grapes away from ethylene producing fruits. Ideal storage temperature is 33-38 degrees F with good air circulation.



RED SEEDLESS FRESH REF

PACKER

11 LB

7073919

Nutritional Facts

Serving Size G (126G)
Servings Per Container

Amount Per Serving
Calories 90
Calories from Fat 0

% Daily Value *

Total Fat 0G 0%

Saturated Fat 0G

Trans Fat 0G

Cholesterol 0mg 0%

Sodium 15mg 1%

Total Carbohydrate 23G 8%

Dietary Fiber 1G 4%

Sugars 20G

Protein 0G

Vitamin A 0%

Vitamin C 2%

Calcium 2%

Iron 0%

* Percent Daily Values are based on a 2,000 calorie diet. Your daily values may be higher or lower depending on your calorie needs:

		Calories	2,000	2,500
Total Fat	Less than	65g	80g	
Sat Fat	Less than	20g	25g	
Cholesterol	Less than	300mg	300mg	
Sodium	Less than	2400mg	2400mg	
Total Carbohydrate		300g	375mg	
Dietary Fiber		25g	30mg	

Supplemental Facts

% Daily Value *

None Specified at this time

* Percent Daily Values are based on a 2,000 calorie diet. Your daily values may be higher or lower depending on your calorie needs.

Allergens

ALLERGEN	DOES NOT CONTAIN	CONTAIN	MAY CONTAIN	NO DATA
Crustacean				•
Eggs				•
Fish				•
Gluten				•
Lactose				•
Milk				•
Mustard				•
Peanuts				•
Soy				•
Tree nuts				•
Wheat				•

Nutritional Claims

- This product is trans fat free

Nutritional Disclaimer

The nutritional and ingredient information provided is based on data US Foods, Inc. receives from manufacturers and may include information derived from third-party sources such as the United States Department of Agriculture. The information provided is representative and, as a result, there may be some slight differences between the information posted and the information on the product label with respect to ingredients and/or nutritional values. The most accurate and up to date source for product information is on the product label. US Foods, Inc. neither assumes any legal liability nor makes any warranty or guaranty, either express or implied regarding the completeness, accuracy or usefulness of this information. Product images are provided for reference only and may not reflect current packaging.



PACKER

Orange

CLEMENTINE BOX FRESH REF

6782692



10/3 LB

Product Description

Ingredients

ORANGE

Product Information

Class: 25 - PRODUCE, FRESH

Category: 342 - CITRUS, FRESH

Group: 2522 - ORANGES, FRESH



CLEMENTINE BOX FRESH REF

PACKER

10/3 LB

6782692

Nutritional Facts

Serving Size G (154G)
Servings Per Container

Amount Per Serving
Calories 80
Calories from Fat 0

% Daily Value *

Total Fat 0G	0%
Saturated Fat 0G	
Trans Fat 0G	
Cholesterol 0mg	0%
Sodium 0mg	0%
Total Carbohydrate 19G	6%
Dietary Fiber 3G	12%
Sugars 14G	
Protein 1G	
Vitamin A	2%
Vitamin C	130%
Calcium	6%
Iron	0%

* Percent Daily Values are based on a 2,000 calorie diet. Your daily values may be higher or lower depending on your calorie needs:

	Calories	2,000	2,500
Total Fat	Less than	65g	80g
Sat Fat	Less than	20g	25g
Cholesterol	Less than	300mg	300mg
Sodium	Less than	2400mg	2400mg
Total Carbohydrate		300g	375mg
Dietary Fiber		25g	30mg

Supplemental Facts

% Daily Value *

None Specified at this time

* Percent Daily Values are based on a 2,000 calorie diet. Your daily values may be higher or lower depending on your calorie needs.

Allergens

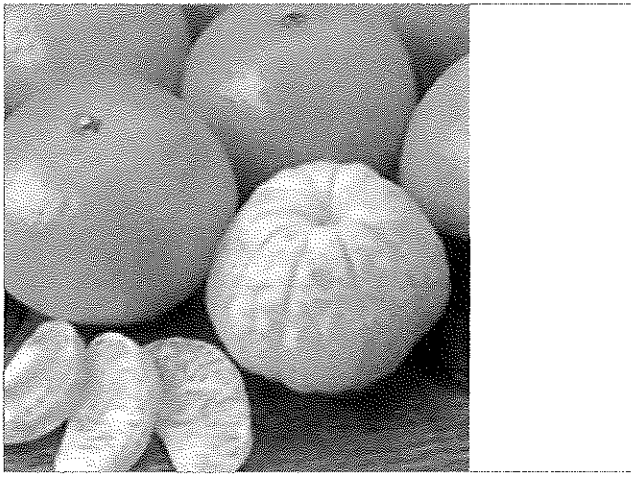
ALLERGEN	DOES NOT CONTAIN	CONTAIN	MAY CONTAIN	NO DATA
Crustacean				•
Eggs				•
Fish				•
Gluten				•
Lactose				•
Milk				•
Mustard				•
Peanuts				•
Soy				•
Tree nuts				•
Wheat				•

Nutritional Claims

- This product is trans fat free

Nutritional Disclaimer

The nutritional and ingredient information provided is based on data US Foods, Inc. receives from manufacturers and may include information derived from third-party sources such as the United States Department of Agriculture. The information provided is representative and, as a result, there may be some slight differences between the information posted and the information on the product label with respect to ingredients and/or nutritional values. The most accurate and up to date source for product information is on the product label. US Foods, Inc. neither assumes any legal liability nor makes any warranty or guaranty, either express or implied, regarding the completeness, accuracy or usefulness of this information. Product images are provided for reference only and may not reflect current packaging.



PACKER

Orange

FLORIDA JUICE CHOICE FRESH REF

9374216



125 EA

Product Description

Additional Description

FLORIDA #2 JUICING ORANGE.

Ingredients

ORANGE

Product Information

Class: 25 - PRODUCE, FRESH

Category: 342 - CITRUS, FRESH

Group: 2522 - ORANGES, FRESH

Preparation & Cooking

Handling Instructions

Store oranges in a well ventilated area; keep cartons off the floor to prevent boxes from becoming damp. Keep separated from foods that absorb odors such as eggs, apples, cheese, or butter. Florida varieties should be stored between 33-40 degrees F. Other varieties should be stored between 45-50 degrees F. Ethylene sensitive.



FLORIDA JUICE CHOICE FRESH REF

PACKER

125 EA

9374216

Nutritional Facts

Serving Size (100g)
Servings Per Container

Amount Per Serving
Calories 46

Calories from Fat 1.89

% Daily Value *

Total Fat	21g	.32%
Saturated Fat	.025g	
Trans Fat	g	
Cholesterol	0mg	0%
Sodium	0mg	0%
Total Carbohydrate	11.54g	3.85%
Dietary Fiber	2.4g	9.6%
Sugars	9.14g	
Protein	.7g	
Vitamin A		4.5%
Vitamin C		75%
Calcium		4.3%
Iron		.5%

* Percent Daily Values are based on a 2,000 calorie diet. Your daily values may be higher or lower depending on your calorie needs:

	Calories	2,000	2,500
Total Fat	Less than	65g	80g
Sat Fat	Less than	20g	25g
Cholesterol	Less than	300mg	300mg
Sodium	Less than	2400mg	2400mg
Total Carbohydrate		300g	375mg
Dietary Fiber		25g	30mg

Supplemental Facts

% Daily Value *

Vitamin D	0 IU	0%
Folic Acid	17 mcg	
Phosphorus	12 mg	
Polyunsaturated Fat	.042 g	
Monosaturated Fat	.039 g	
Ash	.41 g	
Copper	.039 mg	
Magnesium	10 mg	
Niacin	.4 mg	
Pantothenic Acid	.25 mcg	
Potassium	169 mg	
Riboflavin	.04 mg	
Thiamin	.1 mg	
Vitamin B12	0 mcg	0%
Vitamin B6	.051 mg	2.55%
Water	87.14 g	
Zinc	.08 mg	

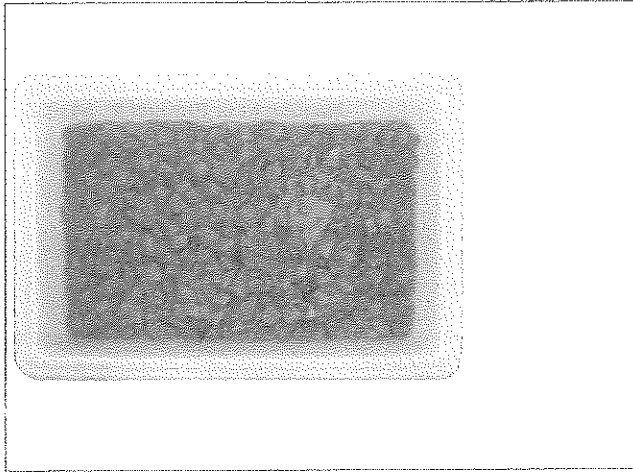
* Percent Daily Values are based on a 2,000 calorie diet. Your daily values may be higher or lower depending on your calorie needs.

Allergens

ALLERGEN	DOES NOT CONTAIN	CONTAIN	MAY CONTAIN	NO DATA
Crustacean				•
Eggs				•
Fish				•
Gluten				•
Lactose				•
Milk				•
Mustard				•
Peanuts				•
Soy				•
Tree nuts				•
Wheat				•

Nutritional Disclaimer

The nutritional and ingredient information provided is based on data US Foods, Inc. receives from manufacturers and may include information derived from third-party sources such as the United States Department of Agriculture. The information provided is representative and, as a result, there may be some slight differences between the information posted and the information on the product label with respect to ingredients and/or nutritional values. The most accurate and up to date source for product information is on the product label. US Foods, Inc. neither assumes any legal liability nor makes any warranty or guaranty, either express or implied, regarding the completeness, accuracy or usefulness of this information. Product images are provided for reference only and may not reflect current packaging.



MONARCH

Peach

DICED IN EXTRA LIGHT-SYRUP CHOICE CANNED YELLOW CLING

8731093



6/#10 CN

Product Description

Manufacturer: MONARCH, Mfr. Product # 541056

Additional Description

MEETS AND EXCEEDS FOODSERVICE INDUSTRY STANDARDS. DISTINCTLY DIFFERENT.

Ingredients

PEACHES, WATER, SUGAR

Product Information

Class: 17 - FRUITS & VEGETABLES, CANNED & DRIED

Category: 139 - FRUITS, CANNED

Group: 1774 - PEACHES, CANNED

Preparation & Cooking

Preparations and Cooking Instructions

READY TO USE. SEAL OPENED CONTAINER AND STORE IN A COOL DRY PLACE

Handling Instructions

STORE IN COOL, DRY SPACE WITH AMBIENT TEMPERATURE. REFRIGERATE REMAINING FRUIT IN SEPARATE CONTAINER AFTER OPENING

Serving Suggestions:

PERFECT FOR SCHOOLS, SALAD BARS, HOSPITALS, INGREDIENTS IN BAKING AND JELLOS



DICED IN EXTRA LIGHT-SYRUP CHOICE CANNED YELLOW CLING

MONARCH

6/#10 CN

Manufacturer: MONARCH

8731093

Manufacturer Product #: 541056

Nutritional Facts

Serving Size (124G)

Servings Per Container 144

Amount Per Serving

Calories 60

Calories from Fat 0

% Daily Value *

Total Fat 0g 0%

Saturated Fat 0g 0%

Trans Fat 0g 0%

Cholesterol 0mg 0%

Sodium 10mg 0%

Total Carbohydrate 14g 5%

Dietary Fiber 0g 0%

Sugars 11g

Protein 0g

Vitamin A 6%

Vitamin C 2%

Calcium 0%

Iron 0%

* Percent Daily Values are based on a 2,000 calorie diet. Your daily values may be higher or lower depending on your calorie needs:

	Calories	2,000	2,500
Total Fat	Less than	65g	80g
Sat Fat	Less than	20g	25g
Cholesterol	Less than	300mg	300mg
Sodium	Less than	2400mg	2400mg
Total Carbohydrate		300g	375mg
Dietary Fiber		25g	30mg

Supplemental Facts

% Daily Value *

Potassium 80 mg 2%

* Percent Daily Values are based on a 2,000 calorie diet. Your daily values may be higher or lower depending on your calorie needs.

Allergens

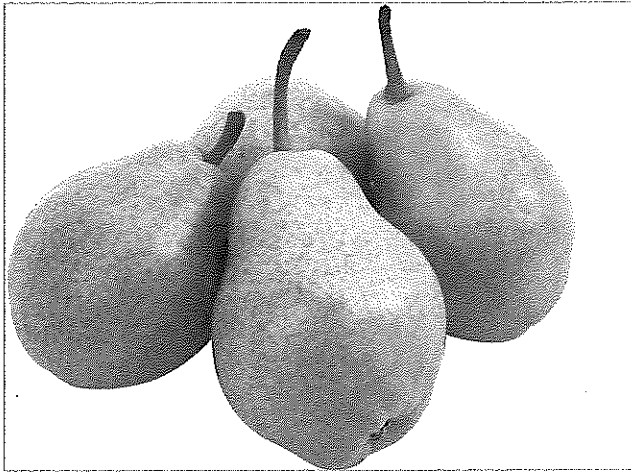
ALLERGEN	DOES NOT CONTAIN	CONTAIN	MAY CONTAIN	NO DATA
Crustacean	•			
Eggs	•			
Fish	•			
Gluten				•
Lactose				•
Milk	•			
Mustard				•
Peanuts	•			
Soy	•			
Tree nuts	•			
Wheat	•			

Marketing Claims

- This product is kosher

Nutritional Disclaimer

The nutritional and ingredient information provided is based on data US Foods, Inc. receives from manufacturers and may include information derived from third-party sources such as the United States Department of Agriculture. The information provided is representative and, as a result, there may be some slight differences between the information posted and the information on the product label with respect to ingredients and/or nutritional values. The most accurate and up to date source for product information is on the product label. US Foods, Inc. neither assumes any legal liability nor makes any warranty or guaranty, either express or implied, regarding the completeness, accuracy or usefulness of this information. Product images are provided for reference only and may not reflect current packaging.



PACKER

Pear

BARTLETT FRESH REF

347427



135 EA

Product Description

Additional Description

PEAR, BARLT FRESH

Ingredients

PEAR

Product Information

Class: 25 - PRODUCE, FRESH

Category: 340 - APPLES AND PEARS, FRESH

Group: 2541 - PEARS, FRESH

Preparation & Cooking

Handling Instructions

For long term storage, pears should be held at approximately 33 degrees F and 90-95 percent relative humidity. To ripen pears, hold at 60-70 degrees F with a humidity of 90-95 percent. Treating pears with ethylene for 2 days will promote faster and more uniform ripening. Handle with care to prevent bruising. Ideal storage temperature 33-44 degrees F. High ethylene gas producer.



BARTLETT FRESH REF

PACKER

135 EA

347427

Nutritional Facts

Serving Size G (166G)
Servings Per Container

Amount Per Serving
Calories 100

Calories from Fat 0

% Daily Value *

Total Fat 0G	0%
Saturated Fat 0G	
Trans Fat 0G	
Cholesterol 0mg	0%
Sodium 0mg	0%
Total Carbohydrate 26G	9%
Dietary Fiber 6G	24%
Sugars 16G	
Protein 1G	
Vitamin A	0%
Vitamin C	10%
Calcium	2%
Iron	0%

* Percent Daily Values are based on a 2,000 calorie diet. Your daily values may be higher or lower depending on your calorie needs:

	Calories	2,000	2,500
Total Fat	Less than	65g	80g
Sat Fat	Less than	20g	25g
Cholesterol	Less than	300mg	300mg
Sodium	Less than	2400mg	2400mg
Total Carbohydrate		300g	375mg
Dietary Fiber		25g	30mg

Supplemental Facts

% Daily Value *

None Specified at this time

* Percent Daily Values are based on a 2,000 calorie diet. Your daily values may be higher or lower depending on your calorie needs.

Allergens

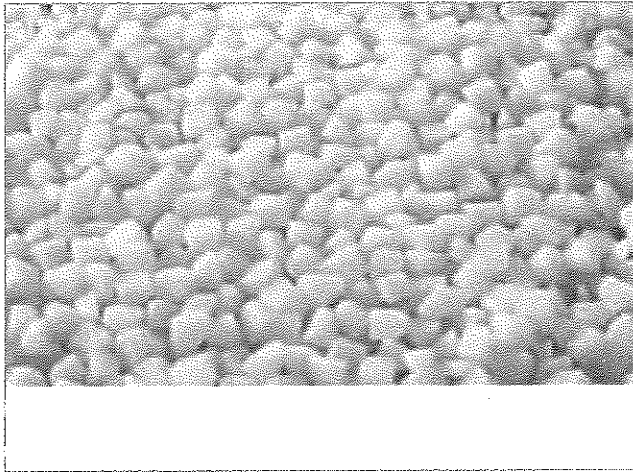
ALLERGEN	DOES NOT CONTAIN	CONTAIN	MAY CONTAIN	NO DATA
Crustacean				•
Eggs				•
Fish				•
Gluten				•
Lactose				•
Milk				•
Mustard				•
Peanuts				•
Soy				•
Tree nuts				•
Wheat				•

Nutritional Claims

- This product is trans fat free

Nutritional Disclaimer

The nutritional and ingredient information provided is based on data US Foods, Inc. receives from manufacturers and may include information derived from third-party sources such as the United States Department of Agriculture. The information provided is representative and, as a result, there may be some slight differences between the information posted and the information on the product label with respect to ingredients and/or nutritional values. The most accurate and up to date source for product information is on the product label. US Foods, Inc. neither assumes any legal liability nor makes any warranty or guaranty, either express or implied, regarding the completeness, accuracy or usefulness of this information. Product images are provided for reference only and may not reflect current packaging.



MONARCH-D

Pear

DICED NORTHWEST IN JUICE CANNED

4328159



6/#10 CN

Product Description

Manufacturer: MONARCH-D, Mfr. Product # 180474

Additional Description

PEAR, NORTHWEST DICED IN JUICE CANNED. MEETS/EXCEEDS FOODSERVICE INDUSTRY STDS-DISTINCTLY DIFFERENT

Ingredients

BARTLETT PEARS, WATER, PEAR JUICE FROM CONCENTRATE.

Product Information

Class: 17 - FRUITS & VEGETABLES, CANNED & DRIED

Category: 139 - FRUITS, CANNED

Group: 1779 - PEARS, CANNED

Preparation & Cooking

Preparations and Cooking Instructions

READY TO USE.

Handling Instructions

SHELF STABLE, STORE IN A COOL DRY PLACE, KEEP UNUSED OPENED PRODUCT IN A SEALED CONTAINER AND REFRIGERATE.

Serving Suggestions:

PERFECT FOR SCHOOLS, SALAD BARS, HOSPITALS, INGREDIENTS IN BAKING AND JELLOS.



DICED NORTHWEST IN JUICE CANNED

MONARCH-D

6/#10 CN

4328159

Manufacturer: MONARCH-D

Manufacturer Product #: 180474

Nutritional Facts

Serving Size g (125G)

Servings Per Container 138

Amount Per Serving

Calories 60

Calories from Fat 0

% Daily Value *

Total Fat 0g 0%

Saturated Fat 0g 0%

Trans Fat 0g

Cholesterol 0mg 0%

Sodium 0mg 0%

Total Carbohydrate 15g 5%

Dietary Fiber 2g 8%

Sugars 10g

Protein .3g

Vitamin A 0%

Vitamin C 2%

Calcium 0%

Iron 2%

* Percent Daily Values are based on a 2,000 calorie diet. Your daily values may be higher or lower depending on your calorie needs:

	Calories	2,000	2,500
Total Fat	Less than	65g	80g
Sat Fat	Less than	20g	25g
Cholesterol	Less than	300mg	300mg
Sodium	Less than	2400mg	2400mg
Total Carbohydrate		300g	375mg
Dietary Fiber		25g	30mg

Supplemental Facts

% Daily Value *

Potassium 130 mg 4%

Vitamin E .08

Vitamin B12 0 mcg

Vitamin B6 .01 mg

* Percent Daily Values are based on a 2,000 calorie diet. Your daily values may be higher or lower depending on your calorie needs.

Allergens

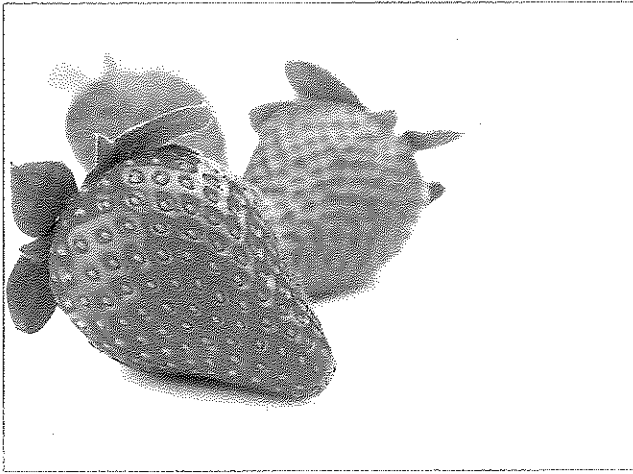
ALLERGEN	DOES NOT CONTAIN	CONTAIN	MAY CONTAIN	NO DATA
Crustacean	•			
Eggs	•			
Fish	•			
Gluten				•
Lactose				•
Milk	•			
Muslard				•
Peanuts	•			
Soy	•			
Tree nuts	•			
Wheat	•			

Marketing Claims

- This product is kosher

Nutritional Disclaimer

The nutritional and ingredient information provided is based on data US Foods, Inc. receives from manufacturers and may include information derived from third-party sources such as the United States Department of Agriculture. The information provided is representative and, as a result, there may be some slight differences between the information posted and the information on the product label with respect to ingredients and/or nutritional values. The most accurate and up to date source for product information is on the product label. US Foods, Inc. neither assumes any legal liability nor makes any warranty or guaranty, either express or implied, regarding the completeness, accuracy or usefulness of this information. Product images are provided for reference only and may not reflect current packaging.



MONARCH

Strawberry

WHOLE IQF FROZEN IMPORTED MEXICO

7419294



10 LB

Product Description

Manufacturer: MONARCH, Mfr. Product # 630612

Additional Description

WHEN YOUR RECIPE NEEDS JUST THE RIGHT BLEND OF GRADE A QUALITY STRAWBERRIES, THESE WHOLE, FROZEN STRAWBERRIES IMPORTED FROM MEXICO WILL IMPRESS. THAW IN REFRIGERATOR 10-15 HOURS.

Ingredients

STRAWBERRIES

Product Information

Class: 26 - GROCERY, REF & FZN

Category: 221 - FRUITS, FZN

Group: 1914 - STRAWBERRIES, FROZEN

Preparation & Cooking

Preparations and Cooking Instructions

THAW AS NEEDED

Handling Instructions

THAW IF YOU WILL USE WITHIN 7 DAYS

Serving Suggestions:

USE IN BAKING, SMOOTHIES OR OTHER FROZEN DRINKS, AS A GARNISH OR SALADS

WHOLE IQF FROZEN IMPORTED MEXICO

MONARCH

10 LB

Manufacturer: MONARCH

7419294

Manufacturer Product #: 630612

Nutritional Facts

Serving Size g (140G)
Servings Per Container 32

Amount Per Serving

Calories 45	Calories from Fat 0
--------------------	----------------------------

% Daily Value *

Total Fat 0g 0%

Saturated Fat 0g **0%**

Trans Fat Og

Cholesterol	0mg	0%
--------------------	------------	-----------

Sodium 0mg **0%**

Total Carbohydrate 11g 4%

Dietary Fiber 3g **12%**

Sugars 7g

Protein g

.....

Vitamin A 0%

Vitamin C 137%

Calcium 2%

Iron 2%

* Percent Daily Values are based on a 2,000 calorie diet. Your daily values may be higher or lower depending on your calorie needs:

	Calories	2,000	2,500
Total Fat	Less than	65g	80g
Sat Fat	Less than	20g	26g
Cholesterol	Less than	300mg	300mg
Sodium	Less than	2400mg	2400mg
Total Carbohydrate		300g	375mg
Dietary Fiber		25g	30mg

Supplemental Facts

% Daily Value *

Vitamin D 0 mg	0%
----------------	----

Polyunsaturated Fat 0 g

Monosaturated Fat 0.0

Potassium 0 mg 0%

* Percent Daily Values are based on a 2,000 calorie diet. Your daily values may be higher or lower depending on your calorie needs.

Allergens

ALLERGEN	DOES NOT CONTAIN	CONTAIN	MAY CONTAIN	NO DATA
Crustacean	●			
Eggs	●			
Fish	●			
Gluten				●
Lactose				●
Milk	●			
Mustard				●
Peanuts	●			
Soy	●			
Tree nuts	●			
Wheat	●			

Nutritional Claims

- This product is trans fat free

Marketing Claims

- This product is kosher

Nutritional Disclaimer

The nutritional and ingredient information provided is based on data US Foods, Inc. receives from manufacturers and may include information derived from third-party sources such as the United States Department of Agriculture. The information provided is representative and, as a result, there may be some slight differences between the information posted and the information on the product label with respect to ingredients and/or nutritional values. The most accurate and up to date source for product information is on the product label. US Foods, Inc. neither assumes any legal liability nor makes any warranty or guaranty, either express or implied, regarding the completeness, accuracy or usefulness of the information. Product images are provided for reference only and may not reflect current packaging.