



BOSCO'S

Breadstick

MOZZARELLA STUFFED 7" BAKED FROZEN BULK

8520983

108/3.06 OZ

Product Description

Manufacturer: TYSON FOODS INC., Mfr. Product # 702108-1120

Additional Description

BREADSTICK, SOFT CHEESE STUFFED 7" THAW & SERVE LOOSE PACK FROZEN

Ingredients

CRUST: FLOUR BLEND (WHOLE-WHEAT FLOUR, ENRICHED FLOUR (WHEAT FLOUR, NIACIN, REDUCED IRON, THIAMINE MONONITRATE, RIBOFLAVIN, FOLIC ACID, ENZYME)), WATER, BROWN SUGAR, CORN OIL, DOUGH CONDITIONER (SOYBEAN OIL, VEGETABLE GLYCERIDES, SOY FLAKES), SALT, YEAST, ENZYME. CHEESES: REDUCED FAT, REDUCED SODIUM MOZZARELLA CHEESE (PASTEURIZED PART SKIM MILK, NON-FAT MILK, MODIFIED FOOD STARCH*, CHEESE CULTURE, SALT, POTASSIUM CHLORIDE*, NATURAL FLAVORS*, ANNATTO, VITAMIN A PALMITATE, ENZYMES), MOZZARELLA CHEESE (PASTEURIZED PART SKIM MILK, CHEESE CULTURE, SALT, ENZYMES). *INGREDIENTS NOT IN REGULAR MOZZARELLA CHEESE.

Product Information

Class: 20 - APPETIZERS, ENTREES, & POTATOES REF & FZN

Category: 151 - ENTREES, REF & FZN

Group: 2372 - DOUGH-FILLED ENTREES, FROZEN



MOZZARELLA STUFFED 7" BAKED FROZEN BULK

BOSCO'S

108/3.06 OZ

Manufacturer: TYSON FOODS INC.

8520983

\$46.67 / CS

Manufacturer Product #: 702108-1120

Nutritional Facts

Serving Size gr (87gr)	
Servings Per Container 108	
Amount Per Serving	
Calories 230	Calories from Fat 70
% Daily Value *	
Total Fat 7g	10.77%
Saturated Fat 4g	20%
Trans Fat 0g	
Cholesterol 15mg	5%
Sodium 310mg	13.48%
Total Carbohydrate 28g	9.33%
Dietary Fiber 2g	8%
Sugars 1g	
Protein 12g	
Vitamin A	.13%
Vitamin C	0%
Calcium	2%
Iron	55.56%

* Percent Daily Values are based on a 2,000 calorie diet. Your daily values may be higher or lower depending on your calorie needs:

		Calories	2,000	2,500
Total Fat	Less than	65g	80g	
Sat Fat	Less than	20g	25g	
Cholesterol	Less than	300mg	300mg	
Sodium	Less than	2400mg	2400mg	
Total Carbohydrate		300g	375mg	
Dietary Fiber		25g	30mg	

Supplemental Facts

% Daily Value *

None Specified at this time

* Percent Daily Values are based on a 2,000 calorie diet. Your daily values may be higher or lower depending on your calorie needs.

Allergens

ALLERGEN	DOES NOT CONTAIN	CONTAIN	MAY CONTAIN	NO DATA
Crustacean				●
Eggs				●
Fish				●
Gluten				●
Lactose				●
Milk				●
Mustard				●
Peanuts				●
Soy				●
Tree nuts				●
Wheat				●

Nutritional Claims

- This product has child nutrition certification

Nutritional Disclaimer

The nutritional and ingredient information provided is based on data US Foods, Inc. receives from manufacturers and may include information derived from third-party sources such as the United States Department of Agriculture. The information provided is representative and, as a result, there may be some slight differences between the information posted and the information on the product label with respect to ingredients and/or nutritional values. The most accurate and up to date source for product information is on the product label. US Foods, Inc. neither assumes any legal liability nor makes any warranty or guaranty, either express or implied, regarding the completeness, accuracy or usefulness of this information. Product images are provided for reference only and may not reflect current packaging.

Whole Wheat Cheese Breadstick 96WBSM



Pack Size: 96/2.00oz. portions per case

Child Nutrition Information:

097388 - One 2.00oz. Whole Wheat Cheese Breadstick Provides 1.00oz. Equivalent Meat Alternate and 1.00oz. Equivalent Grains for the Child Nutrition Meal Pattern Requirements.

Ingredients:

CHEESE: Low Moisture Part Skim Mozzarella Cheese, Pasteurized Milk, Nonfat Milk, Cultures, Salt, Enzymes.
CRUST: Water, Whole Wheat Flour, Enriched Flour (Wheat Flour, Malted Barley Flour, Niacin, Reduced Iron, Thiamine Mononitrate, Riboflavin, Folic Acid), Soybean Oil, Contains 2% or less of: Sugar, Vital Wheat Gluten, Salt, Yeast.

Allergens: Wheat and Milk.

May Contain Soy.

Nardone Bros. is a peanut and tree nut-free facility.

Cooking Instructions:

For a softer crust: Preheat oven to 325 F. Place pizza directly on center oven rack. Cook for 7 to 10 minutes or until cheese is melted and crust edges are golden brown.

For a crispy crust: Preheat oven to 325 F. Place pizza on a baking sheet. Cook for 8 to 11 minutes or until cheese is melted and crust edges are golden brown.

1 piece/serving	g	% DV
Serving Size	57g	
Calories	140	
Calories from Fat	60	
Total Fat	7	11
Saturated Fat	3.5	18
Trans Fat	0	
Cholesterol	20	7
Sodium	330	14
Carbohydrate	14	5
Fiber	1	4
Sugar	2	
Protein	7	
Vitamin A		4
Vitamin C		0
Calcium		15
Iron		6

Shipping Info:

Net Weight: 12.00 lbs.
 Gross Weight: 14.00 lbs.
 Pieces/case: 96
 UPC: 8554112086
 GTIN: 00085541120868
 Dimensions: 15 3/4 x 10 x 7
 Cube: 0.62
 Ti/Hi: 10/9
 Shelf Life: 180 days frozen
 Country of Origin: 100% U.S.



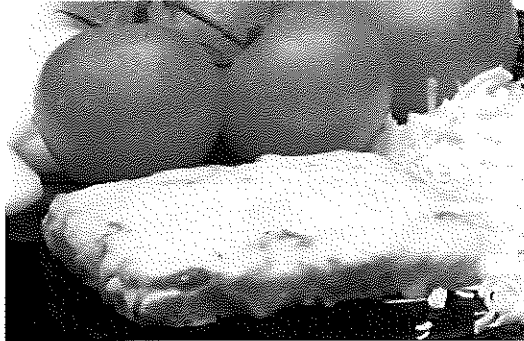
420 New Commerce Blvd. • Wilkes-Barre, PA 18706
 1-800-823-5320

All product information is believed to be truthful and accurate.

Last Updated: 8/9/2018 *Sarah Walsh*

4x6 Whole Wheat Cheese Pizza

96WW2 4x6



Nutrition Facts

Servings per Portion 1
Serving Size 5.00 oz

Amount Per Serving

Calories 336

	% Daily Value*
Total Fat 16 g	25%
Saturated Fat 10 g	52%
Trans Fat 0 g	0
Cholesterol 41 mg	14%
Sodium 435 mg	18%
Potassium 20 mg	0%
Total carbohydrate 27 g	9%
Dietary Fiber 3 g	12%
Sugars 6 g	0
Includes 0g Added Sugars	0
Protein 20 g	0
Vitamin D 0 IU	0
Calcium 17 mg	2%
Iron 2 mg	13%
Potassium 20 mg	0%

* The % Daily Value (DV) tells you how much a nutrient in a serving of food contributes to a daily diet. 2,000 calories a day is used for general nutrition advice.

Shipping Info:

Net Weight: 30.00 lbs.
Gross Weight: 32.00 lbs.
Pieces/case: 96
UPC: 8554112088
GTIN: 00085541120882
Dimensions: 17 1/2 x 12 3/4 x 11 1/4
Cube: 1.43
Ti/Hi: 8/6
Shelf Life: 180 days frozen
Country of Origin: 100% U.S.

Pack Size: 96/5.00oz. portions per case

Child Nutrition Information:

088112 - One 5.00oz. 4x6 Whole Wheat Cheese Pizza Provides 2.00oz. Equivalent Meat Alternate, 2.00oz. Equivalent Grains, and 1/8 Cup Red/Orange Vegetable for the Child Nutrition Meal Pattern Requirements.

Ingredients:

CHEESE: Low Moisture-Part Skim Mozzarella Cheese (Pasteurized Part Skim Milk, Cultures, Salt, Enzymes).
CRUST: Water, Whole Wheat Flour, Enriched Flour (Malted Barley Flour, Niacin, Reduced Iron, Thiamine Mononitrate, Riboflavin, Folic Acid), Soybean Oil, Contains 2% or less of: Vital Wheat Gluten, Sugar, Salt, Yeast.
SAUCE: Tomatoes (Water, Tomato Paste), Contains 1% or Less of Onion, Salt, Spices, Garlic Powder, Soybean Oil, Xanthan Gum.

Allergens: Wheat and Milk.

May Contain Soy.

Nardone Bros. is a peanut and tree nut-free facility.

Cooking Instructions:

For a softer crust: Preheat oven to 325 F. Place pizza directly on center oven rack. Cook for 7 to 10 minutes or until cheese is melted and crust edges are golden brown.

For a crispy crust: Preheat oven to 325 F. Place pizza on a baking sheet. Cook for 8 to 11 minutes or until cheese is melted and crust edges are golden brown.

420 New Commerce Blvd. • Wilkes-Barre, PA 18706
1-800-823-5320

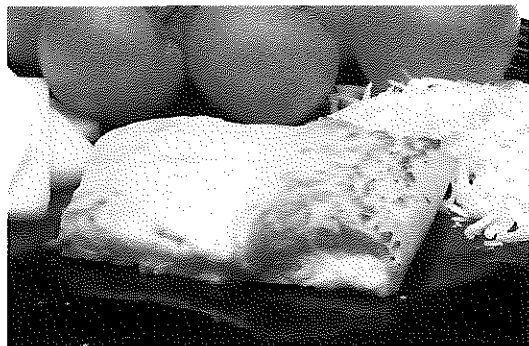
All product information is believed to be truthful and accurate.

Last Updated: 10/12/2018

Sarah Walsh

4x6 Whole Wheat Stuffed Crust Cheese Pizza

72WWSCM2 4x6



Pack Size: 70/4.95oz. portions per case

Child Nutrition Information:

084536 - One 4.95oz. 4x6 Whole Wheat Stuffed Crust Cheese Pizza Provides 2.00oz. Equivalent Meat Alternate, 2.00oz. Equivalent Grains, and 1/8 Cup Red/Orange Vegetable for the Child Nutrition Meal Pattern Requirements.

Ingredients:

CRUST: Whole Wheat Flour, Water, Enriched Flour (Malted Barley Flour, Niacin, Reduced Iron, Thiamine Mononitrate, Riboflavin, Folic Acid), Sugar, Soybean Oil, Vital Wheat Gluten, Yeast, Salt. CHEESE: Low Moisture-Part Skim Mozzarella Cheese (Pasteurized Part Skim Milk, Cultures, Salt, Enzymes). SAUCE: Tomatoes (Water, Tomato Paste), Contains 1% or Less of: Onion, Salt, Spices, Garlic Powder, Soybean Oil, Xanthan Gum. CHEESE: Low Moisture Part Skim Mozzarella Cheese (Pasteurized Milk, Nonfat Milk, Cultures, Salt, Enzymes).

May Contain Soy.

Allergens: Wheat and Milk.

Nardone Bros. is a peanut and tree nut-free facility.

Cooking Instructions:

For a crispy crust: Preheat oven to 325 F. Place pizza directly on center oven rack.

Cook for 7 to 10 minutes or until cheese is melted and crust edges are golden brown.

For a softer crust: Preheat oven to 325 F. Place pizza on a baking sheet. Cook for 8 to 11 minutes or until cheese is melted and crust edges are golden brown.

1 piece/serving	g	% DV
Serving Size	140g	
Calories	320	
Calories from Fat	110	
Total Fat	12	18
Saturated Fat	6	30
Trans Fat	0	
Cholesterol	30	10
Sodium	360	15
Carbohydrate	31	10
Fiber	4	14
Sugar	6	
Protein	22	
Vitamin A		10
Vitamin C		30
Calcium		40
Iron		15

Shipping Info:

Net Weight: 21.65 lbs.
 Gross Weight: 23.65 lbs.
 Pieces/case: 70
 UPC: 8554112029
 Dimensions: 18 1/4 x 15 3/4 x 8
 Cube: 1.33
 Ti/Hi: 6/8
 Shelf Life: 180 days frozen
 Country of Origin: 100% U.S.



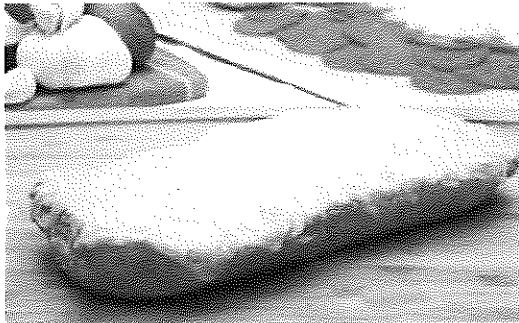
420 New Commerce Blvd. • Wilkes-Barre, PA 18706
 1-800-823-5320

All product information is believed to be truthful and accurate.

Last Updated: 7/24/2017

Sarah Walsh

Whole Wheat French Bread Cheese Pizza 60WUM2



Pack Size: 60/5.50oz. portions per case

Child Nutrition Information:

093794 - One 5.50oz. Whole Wheat French Bread Cheese Pizza Provides 2.00oz. Equivalent Meat Alternate, 2.00oz. Equivalent Grains, 1/4 Cup Red/Orange Vegetable for Child Nutrition Meal Pattern Requirements.

Ingredients:

CRUST: Water, Whole White Wheat Flour, Enriched Flour (Wheat Flour, Malted Barley Flour, Niacin, Reduced Iron, Thiamine Mononitrate, Riboflavin, Folic Acid), Wheat Gluten, Contains less than 2% of each of the following: Yeast, Sugar, Soybean Oil, Datem, Salt, Calcium Propionate (A Preservative), Wheat Flour, Ascorbic Acid (Dough Conditioner), Enzymes. CHEESE: Low Moisture-Part Skim Mozzarella Cheese (Pasteurized Part Skim Milk, Cultures, Salt, Enzymes). SAUCE: Tomatoes (Water, Tomato Paste), Contains 1% or Less of: Onion, Salt, Spices, Garlic Powder, Soybean Oil, Xanthan Gum.

Contains: Wheat, Milk.
May Contain Soy.

Cooking Instructions:

For a softer crust: Preheat oven to 325 F. Place pizza directly on center oven rack. Cook for 7 to 10 minutes or until cheese is melted and crust edges are golden brown.

For a crispy crust: Preheat oven to 325 F. Place pizza on a baking sheet. Cook for 8 to 11 minutes or until cheese is melted and crust edges are golden brown.

Nutrition Facts

Servings per Portion 1
Serving Size 5.50 oz

Amount Per Serving

Calories 333

	% Daily Value*
Total Fat 16 g	25%
Saturated Fat 11 g	53%
Trans Fat 0 g	0
Cholesterol 41 mg	14%
Sodium 363 mg	15%
Potassium 86 mg	2%
Total carbohydrate 28 g	9%
Dietary Fiber 3 g	13%
Sugars 3 g	0
Includes 0g Added Sugars	0
Protein 22 g	0
Vitamin D 0 IU	0
Calcium 67 mg	7%
Iron 2 mg	9%
Potassium 86 mg	2%

* The % Daily Value (DV) tells you how much a nutrient in a serving of food contributes to a daily diet. 2,000 calories a day is used for general nutrition advice.

Shipping Info:

Net Weight: 20.63 lbs.
Gross Weight: 22.63 lbs.
Pieces/case: 60
UPC: 8554112098
Dimensions: 20 1/4 x 16 1/8 x 7 3/8
Cube: 1.40
Ti/Hi: 6/9
Shelf Life: 180 days frozen
Country of Origin: 100% U.S.



420 New Commerce Blvd. • Wilkes-Barre, PA 18706
1-800-823-5320

All product information is believed to be truthful and accurate.

Last Updated: 10/9/2018

Sarah Walsh